

"CONDOMINIUM"

# SUNSET PLAZA EAST APARTMENTS

## A CONDOMINIUM

SECTION 36, TOWNSHIP 31 SOUTH, RANGE 15 EAST

ST. PETERSBURG BEACH, FLORIDA

### PLOT AND FOUNDATION PLANS

#### LEGAL DESCRIPTION:

LOTS D, E AND F, BLOCK 1, BEACH PLAZA SECTION OF ST. PETERSBURG BEACH, AS RECORDED IN PLAT BOOK 23, PAGE 14, RECORDS OF PINELLAS COUNTY, FLORIDA. ST. PETERSBURG BEACH, FLORIDA.

#### FOUNDATION DESCRIPTION:

FROM THE MOST NORTHERLY CORNER OF LOT F, BLOCK 1, BEACH PLAZA SECTION OF ST. PETERSBURG BEACH, AS RECORDED IN PLAT BOOK 23, PAGE 14, RECORDS OF PINELLAS COUNTY, FLORIDA, RUN THENCE SOUTH 25° 45' 33" EAST, 51.20 FEET FOR A POINT OF BEGINNING; THENCE SOUTH 30° 00' 00" EAST, 42 FEET, 0 INCHES; THENCE SOUTH 60° 00' 00" WEST, 115 FEET, 10 INCHES; THENCE NORTH 30° 00' 00" WEST, 8 FEET, 7 INCHES; THENCE SOUTH 60° 00' 00" WEST, 12 FEET, 0 INCHES; THENCE NORTH 30° 00' 00" WEST, 33 FEET, 5 INCHES; THENCE NORTH 60° 00' 00" EAST, 127 FEET, 10 INCHES TO THE POINT OF BEGINNING.

#### CERTIFICATE:

THE UNDERSIGNED HEREBY CERTIFIES THAT THE DESCRIPTIONS AND PLANS OF THE CONDOMINIUM PROPERTY, SET OUT IN SHEETS 1 THROUGH 2 OF THESE DRAWINGS, IS A CORRECT REPRESENTATION OF THE IMPROVEMENTS DESCRIBED HEREIN, AND THAT THERE CAN BE DETERMINED THEREFROM THE IDENTIFICATION, LOCATION, DIMENSION AND SIZE OF THE COMMON ELEMENTS AND OF EACH UNIT.

#### LEGEND:

- C.W. — COVERED WALKWAY.
- O.P. — OPEN PATIO.
- S.W. — STAIRWELL.
- P. — PLAT.
- M. — MEASURED AND CALCULATED.
- R/W — RIGHT OF WAY

GEORGE F. YOUNG, INC.

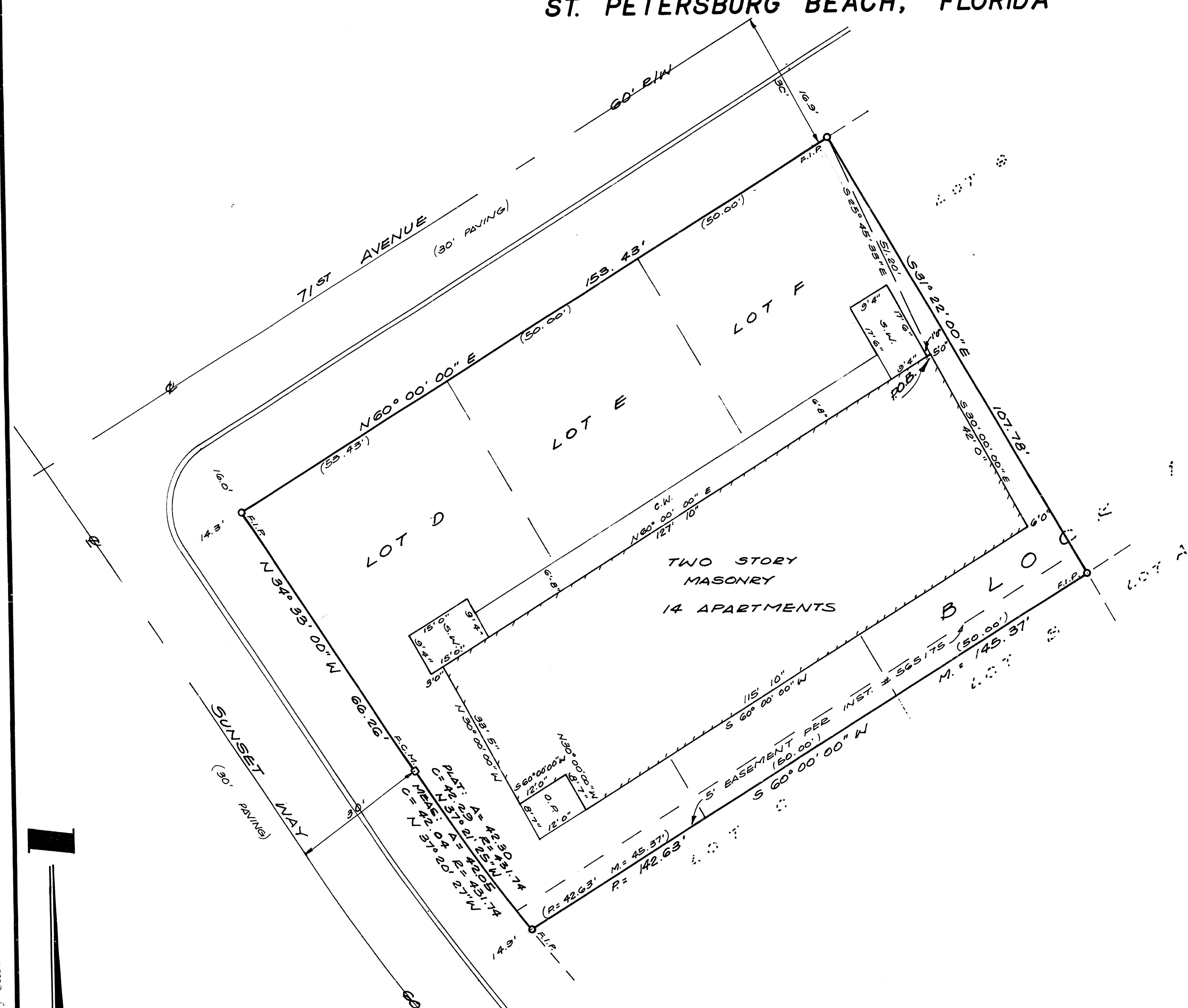
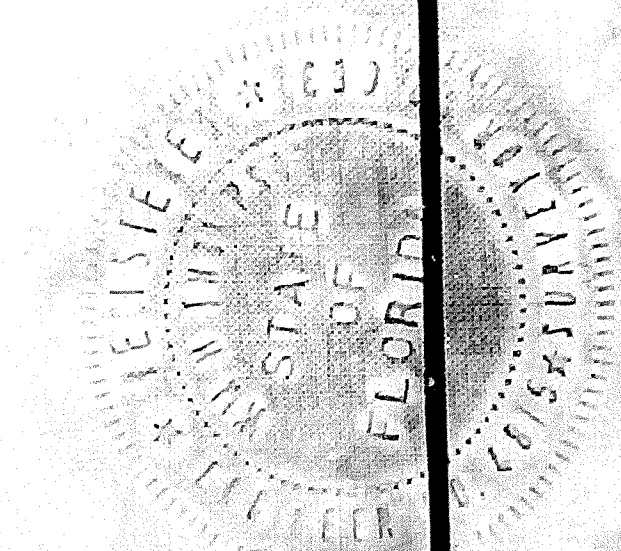
*William St. John* PRESIDENT  
FLORIDA SURVEYOR'S PLAT NO. 663  
FLORIDA ENGINEER'S REG. NO. 4815

HAVING OFFICES AT:

810 ARLINGTON AVENUE NORTH  
ST. PETERSBURG, FLORIDA

DATE: 4 DECEMBER 1970

SHEET 1 OF 2.



SCALE: 1" = 20'

at 2:26 p.m. on 12/4/70  
in the presence of  
Florida, in County of Pinellas, Book 100-121  
6  
HAROLD J. HAYES, Clerk Circuit Court  
By: *Harold Hayes* Deputy Clerk